



# Cope & Stick

VINTAGE RECYCLED WOOD PRODUCTS

Offering Unique Design Possibilities  
Across North Carolina & Nation Wide.



# FLOORING



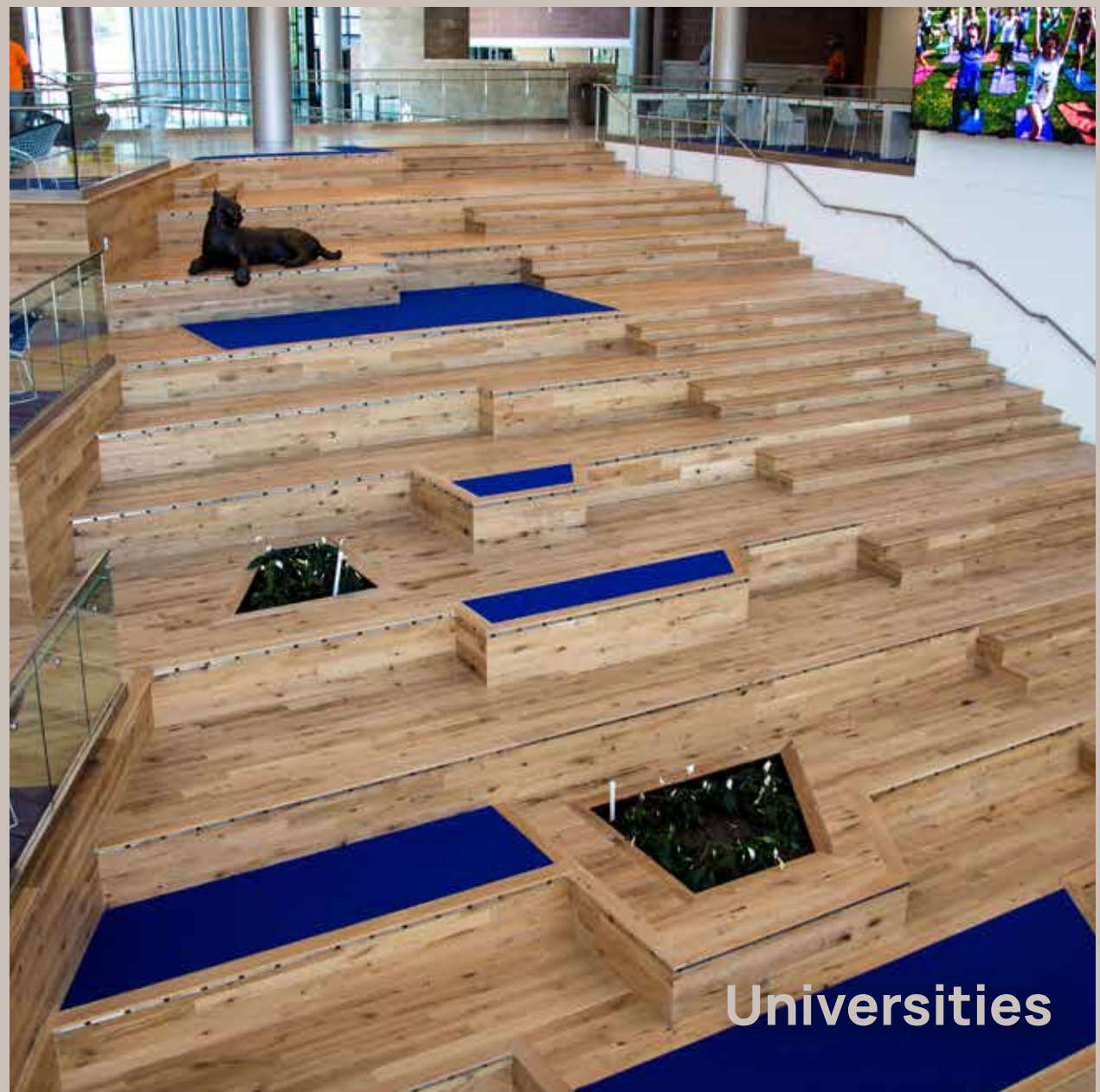
Hotels



Offices



Kitchens



Universities

Euro Oak



Rustic White Oak



Racehorse Oak

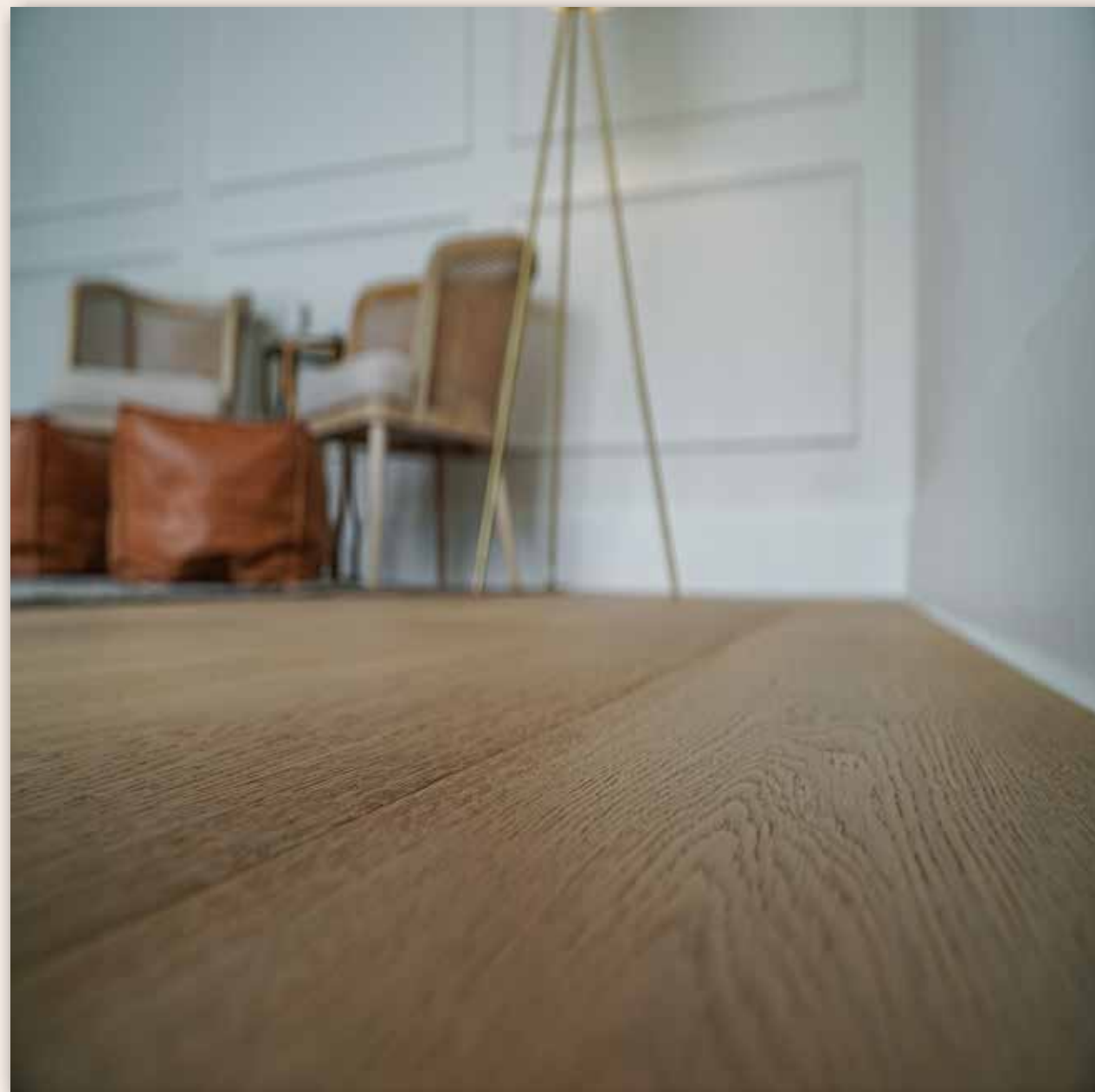
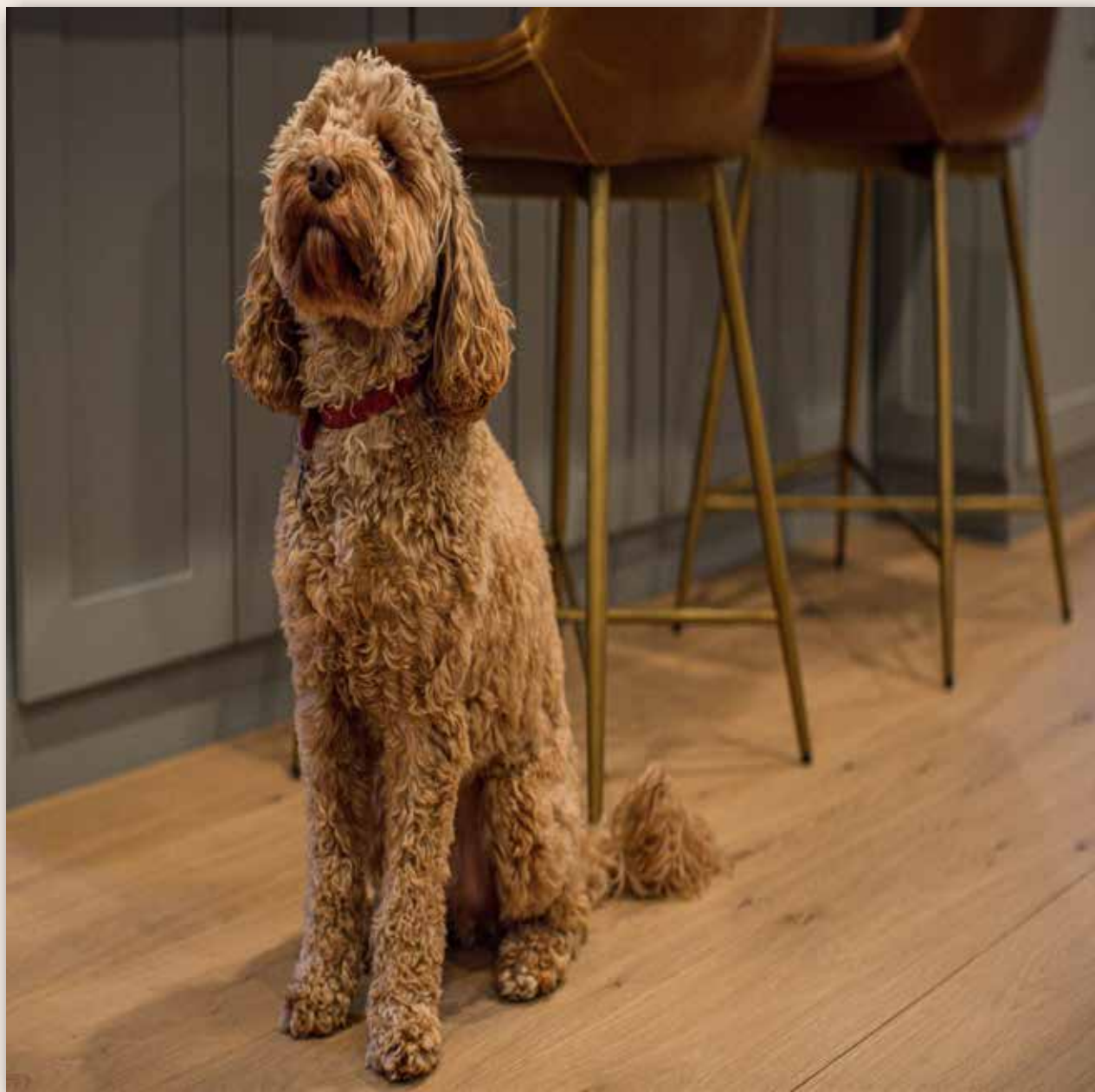


Edgefield Mixed Hardwoods





# EURO OAK



Profile:  
Tongue & Groove Engineered  
Flooring

Dimensions:  
8.5" Widths  
5/8" Thickness  
2'-9' Lengths





# RUSTIC WHITE OAK



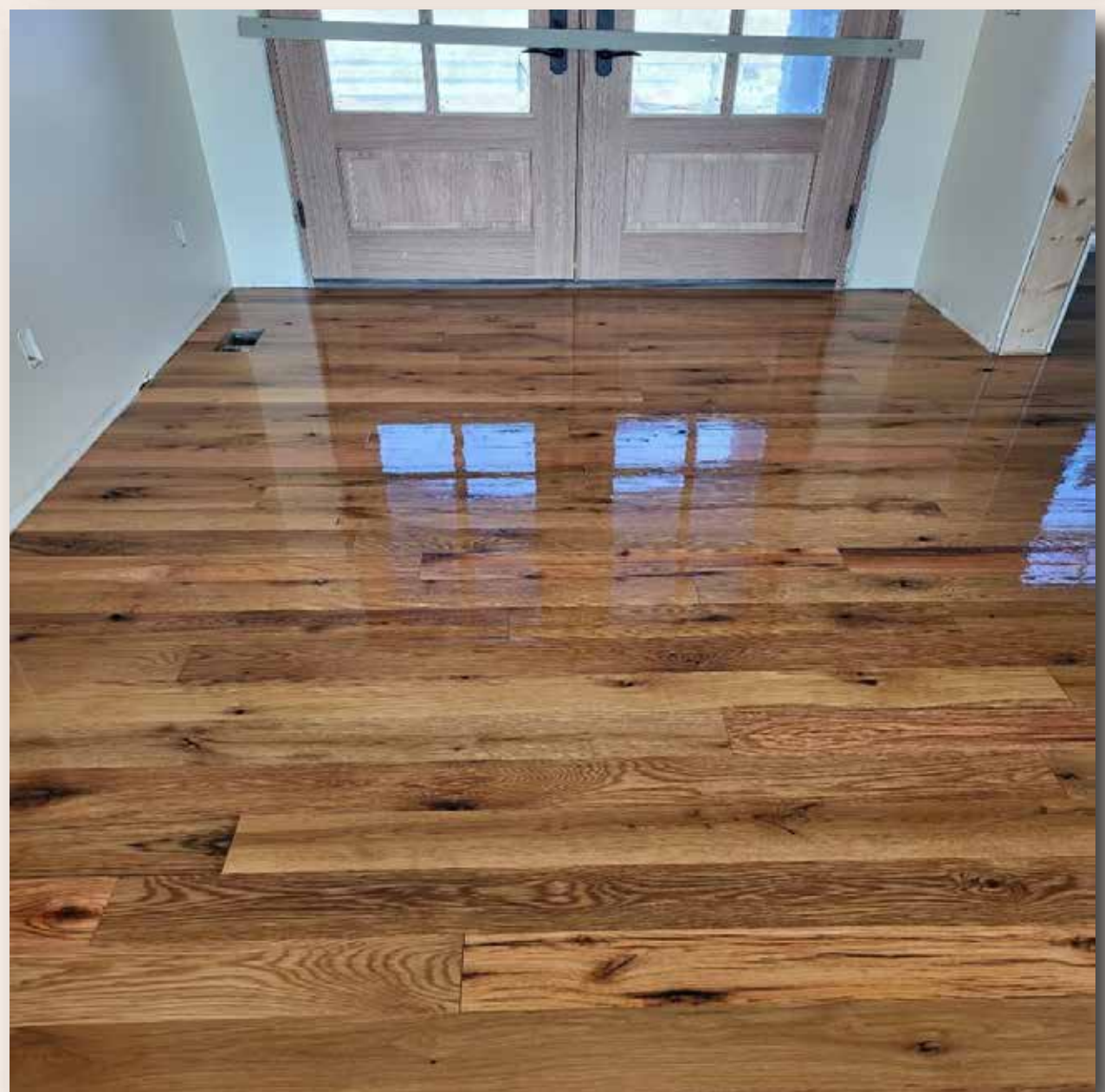
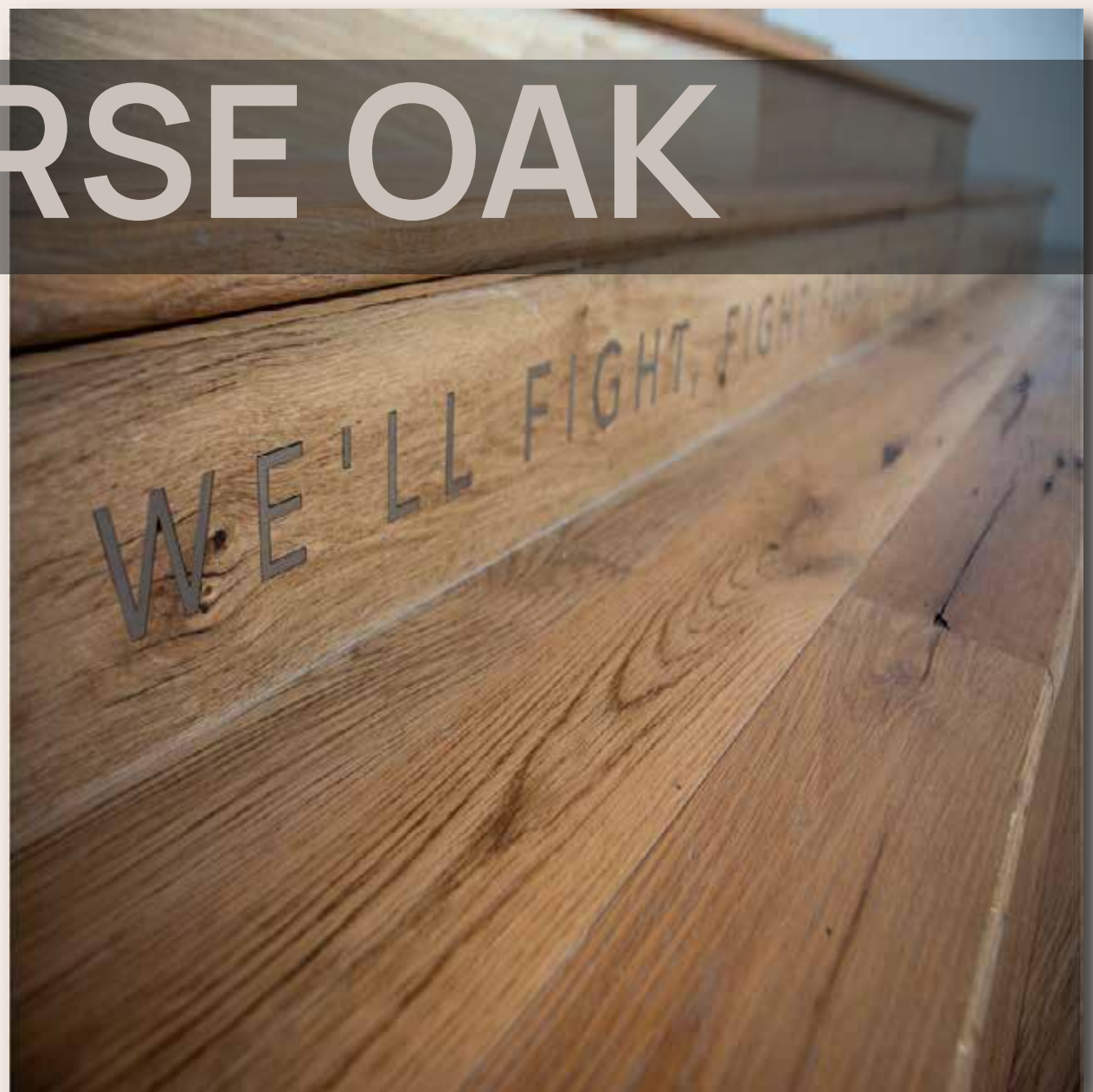
Profile:  
Tongue & Groove Solid  
Flooring

Dimensions:  
5"-10" Widths  
.75" Thickness  
3'-8' Lengths



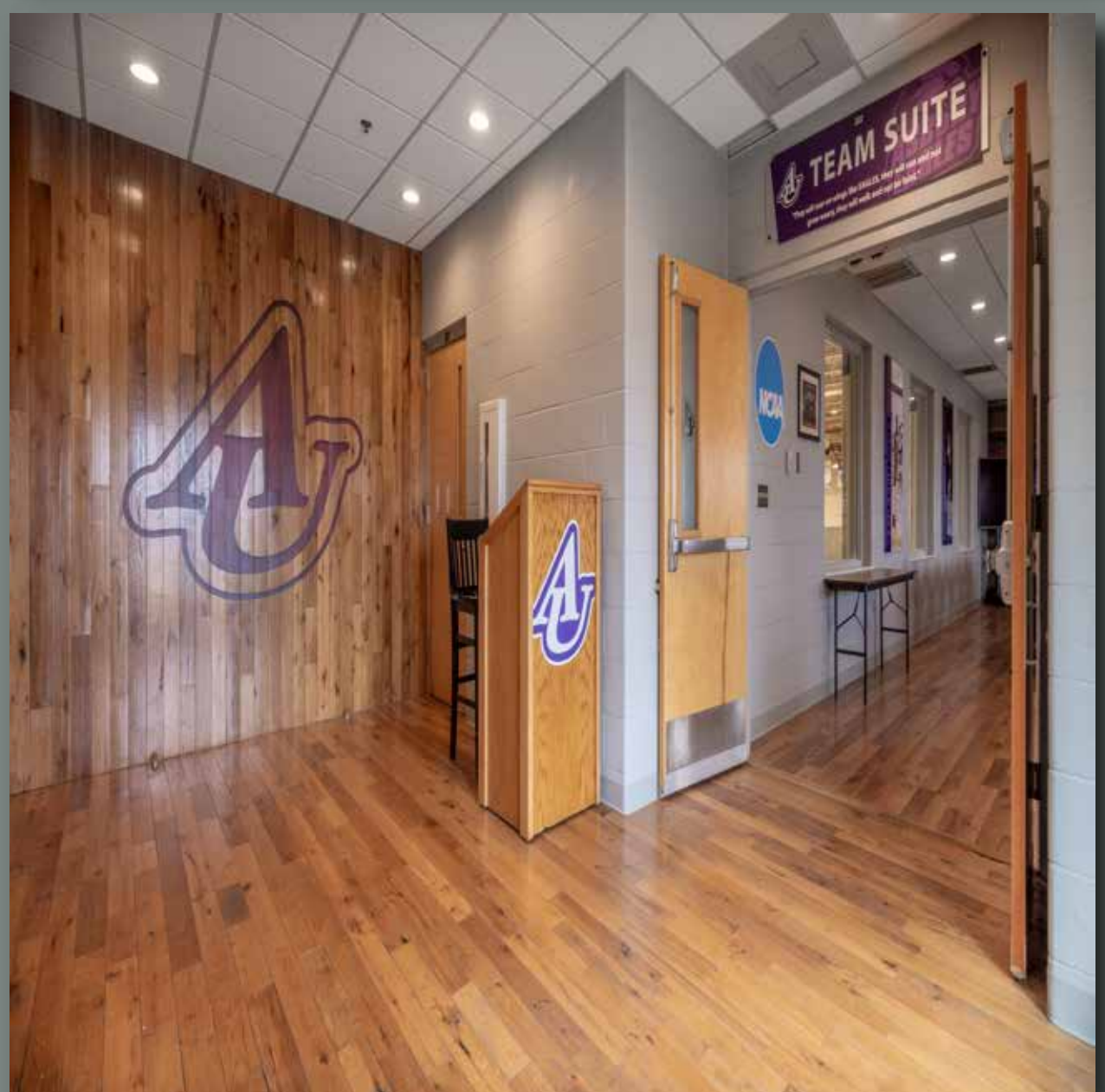


# RACEHORSE OAK



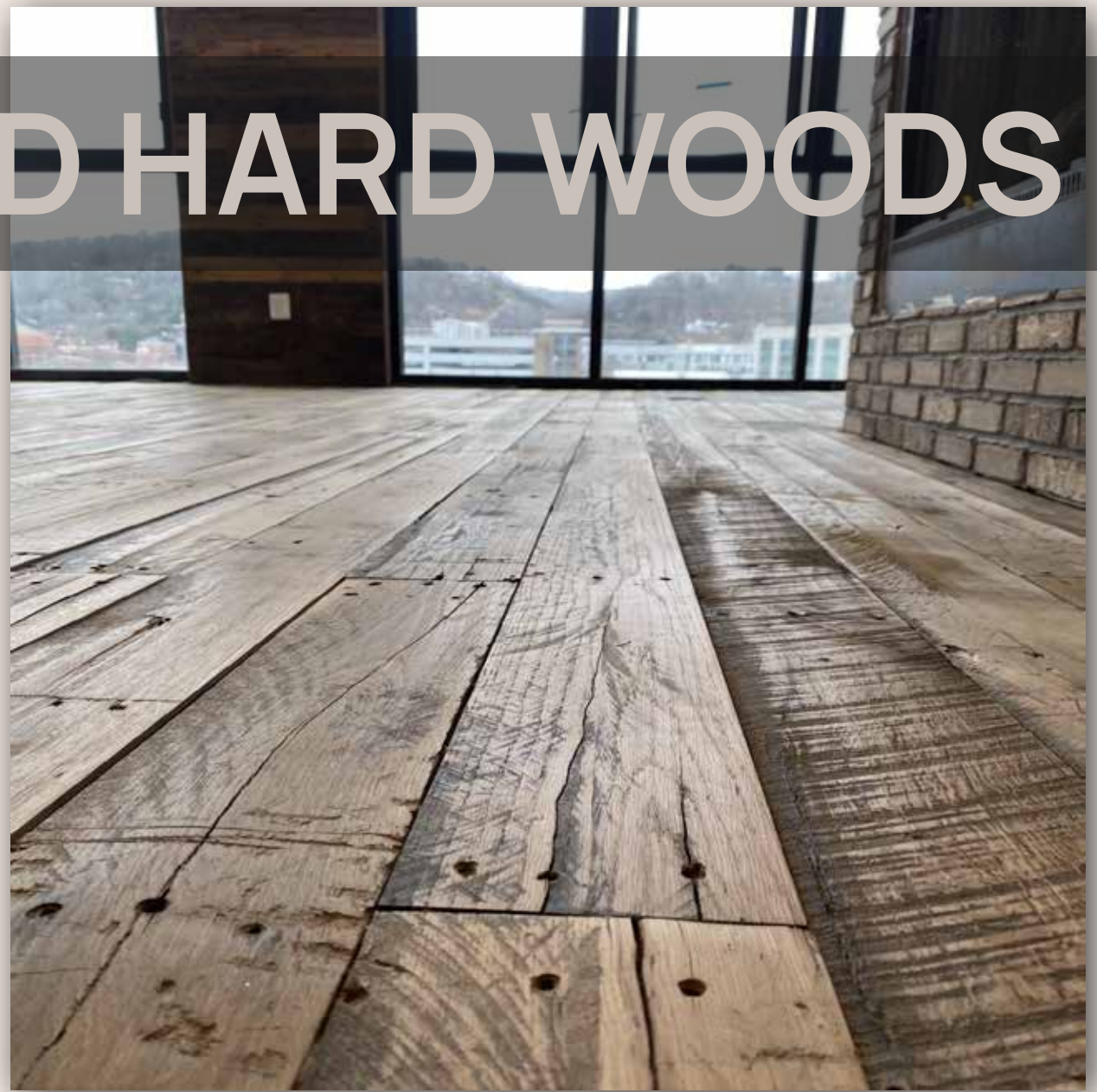
Profile:  
Tongue & Groove Solid  
Flooring

Dimensions:  
4.5" Width  
3/4" Thickness  
1'-7' Lengths



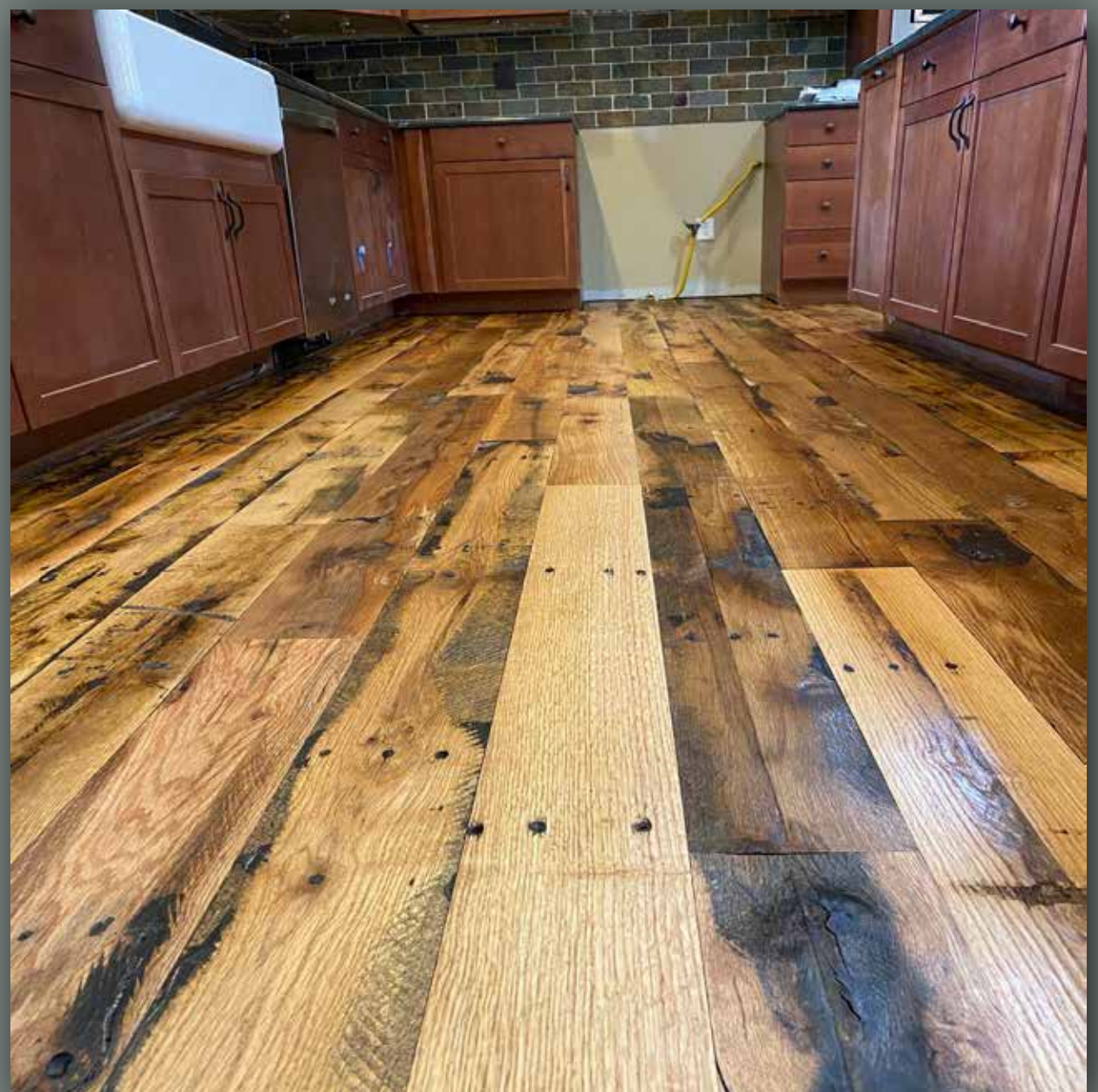


# EDGEFIELD MIXED HARD WOODS



Profile:  
Tongue & Groove Solid  
& Engineered Flooring

Dimensions:  
3", 4", 5" Widths  
.6285" to .700" Thickness  
40" to 72" Lengths





# WALLBOARD



Offices



Commercial



Bathrooms



Residential

Whitewashed



Gray



Brown

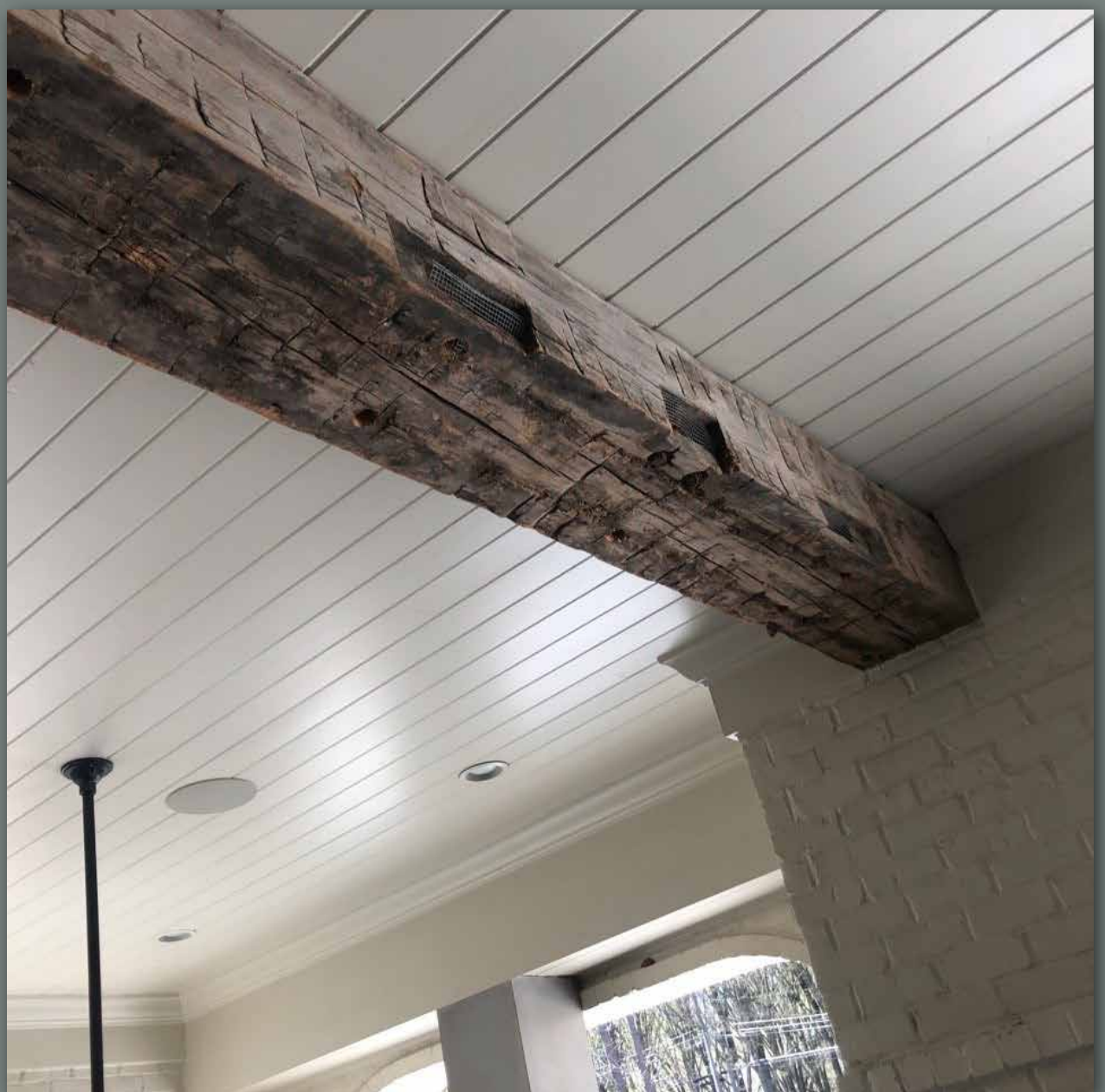
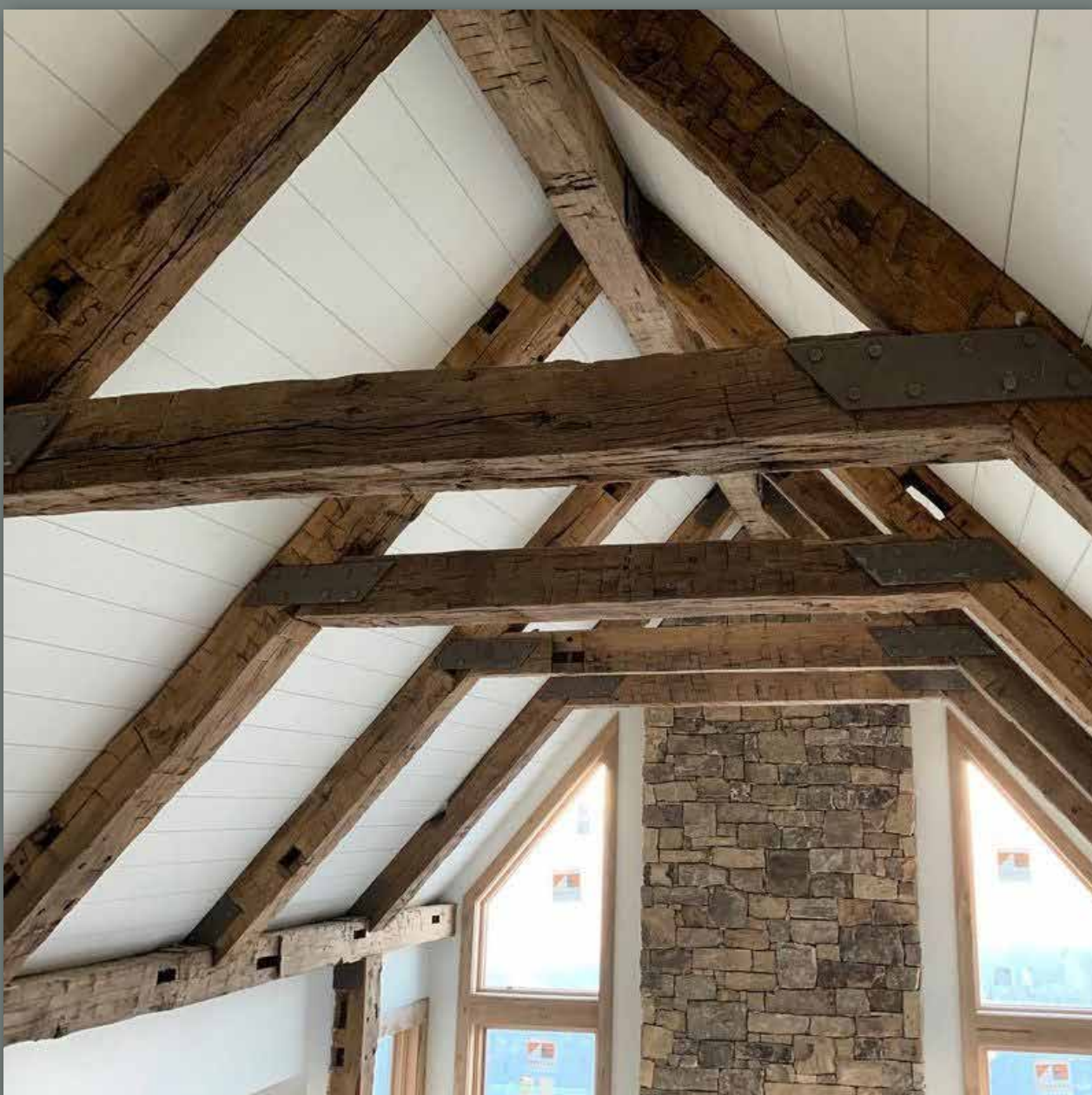


Mixed



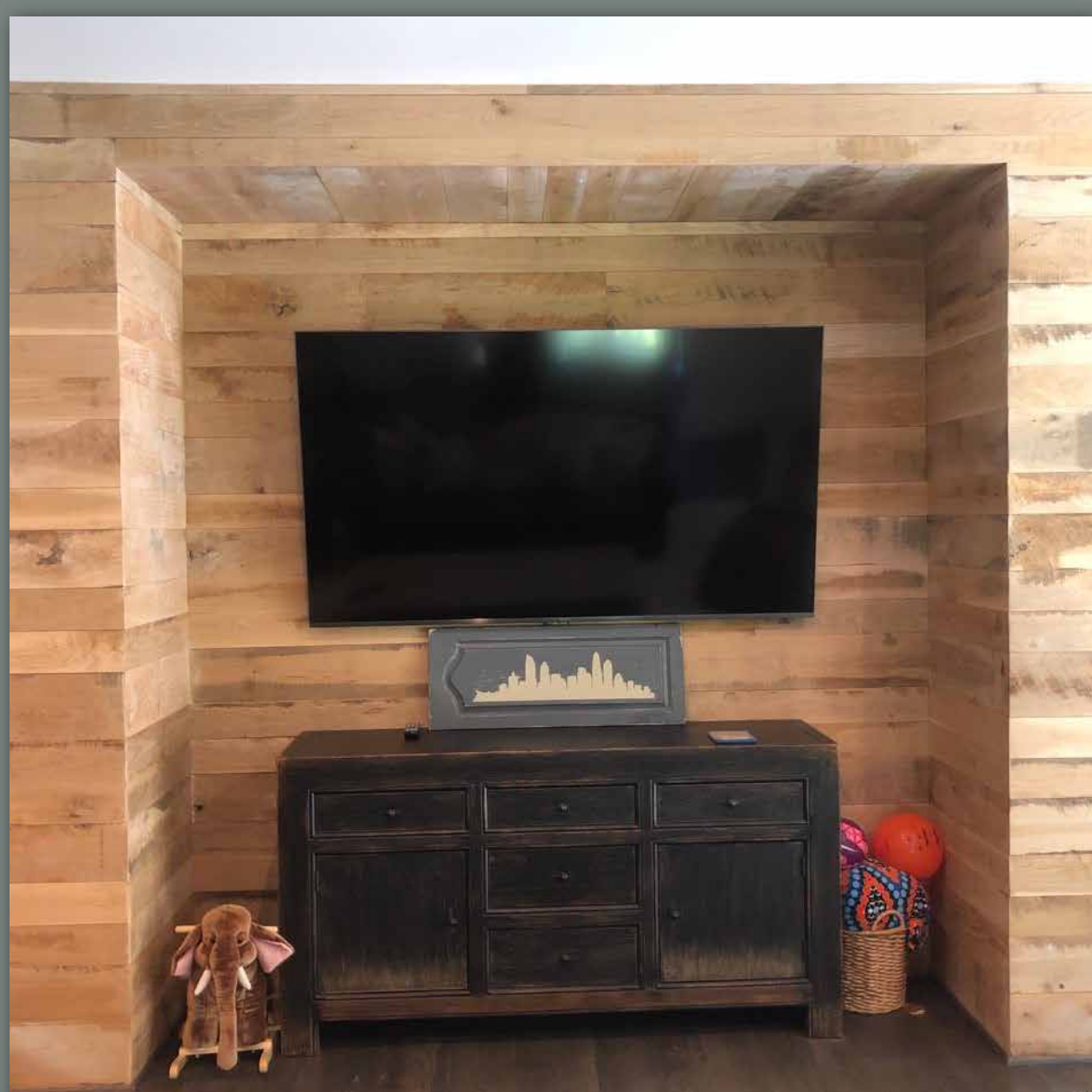
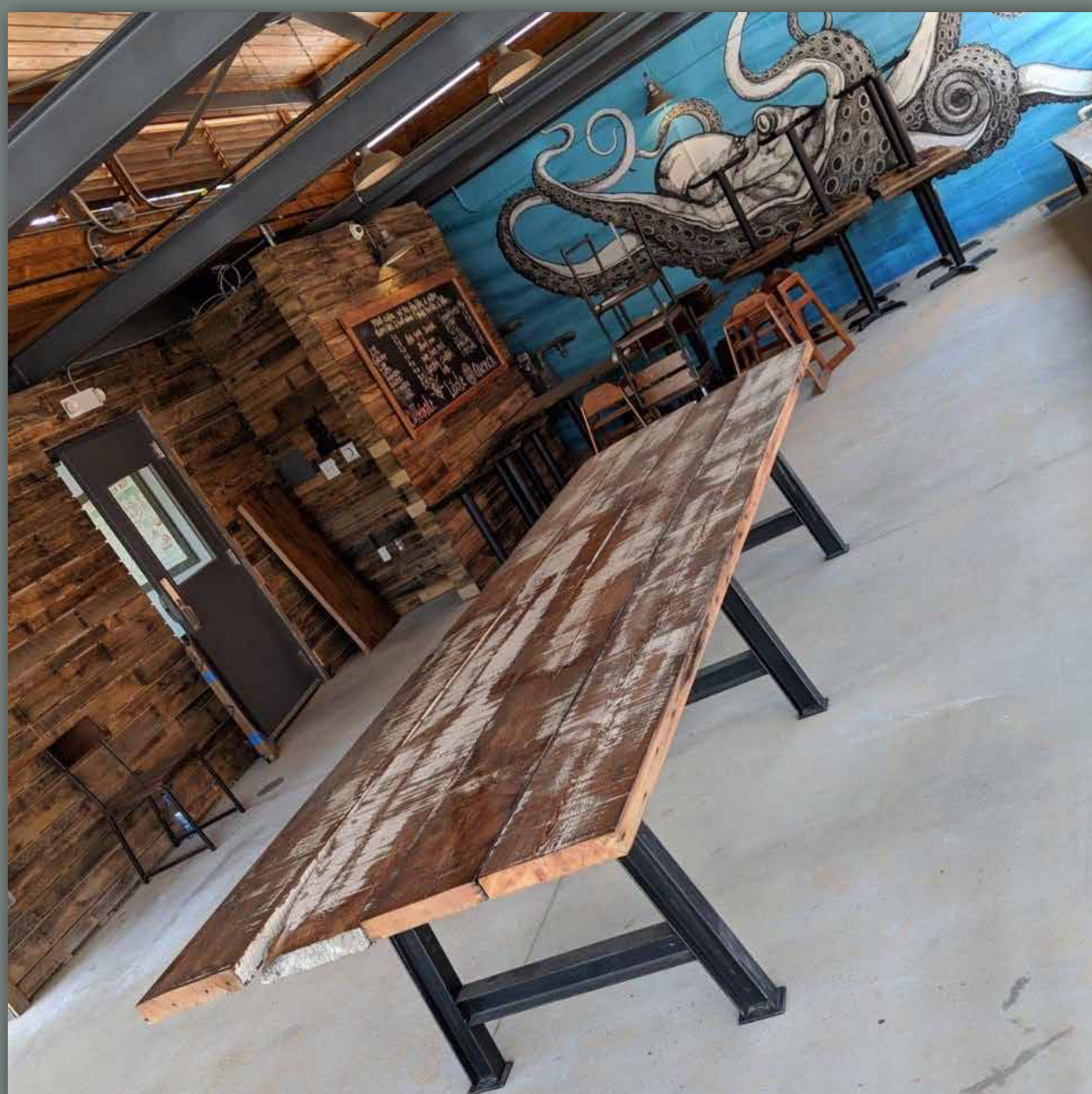


# SOLID & FAUX BEAMS



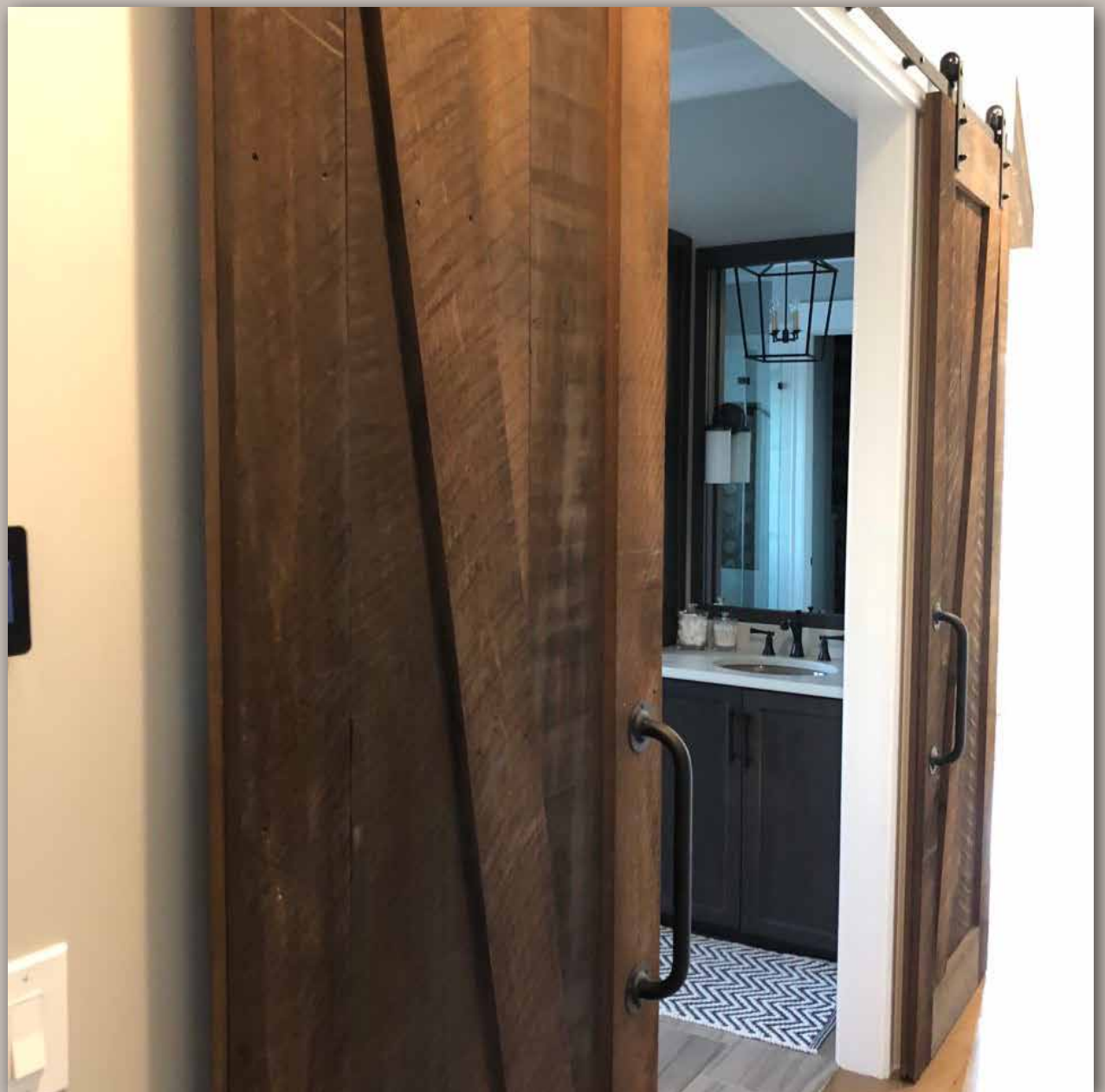
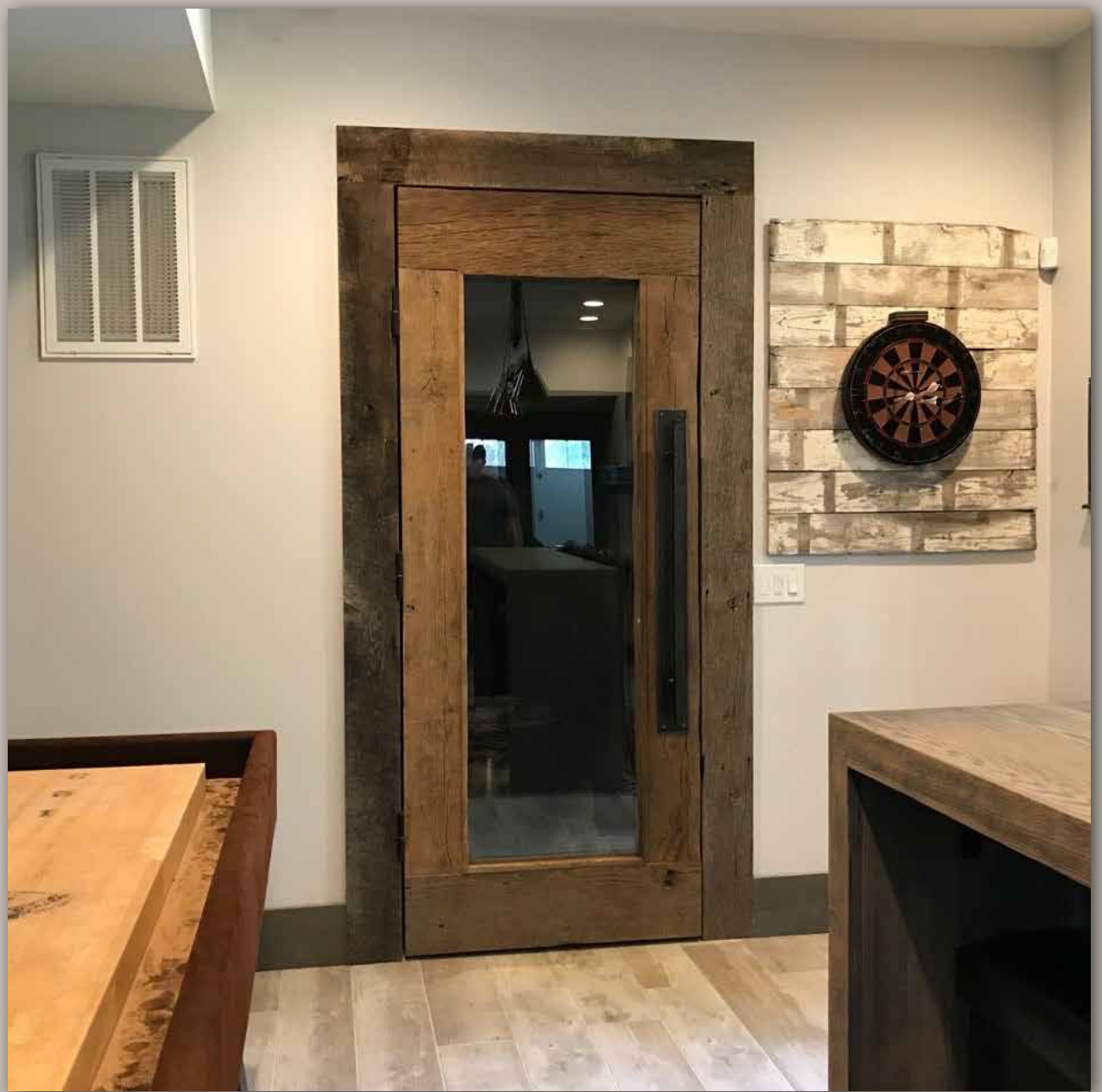


# FURNITURE





# BARN DOORS



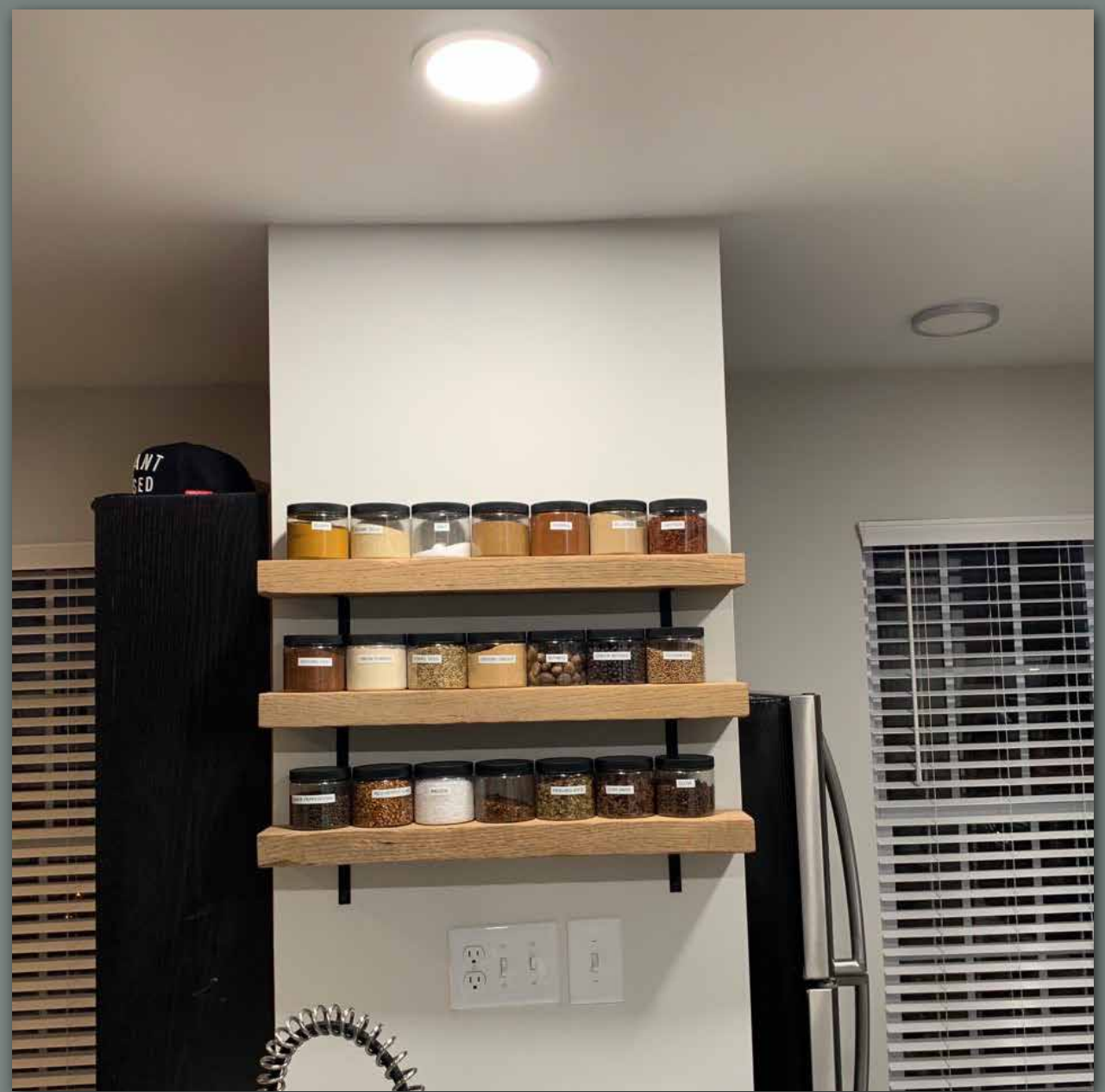


# MANTELS





# SHELVES



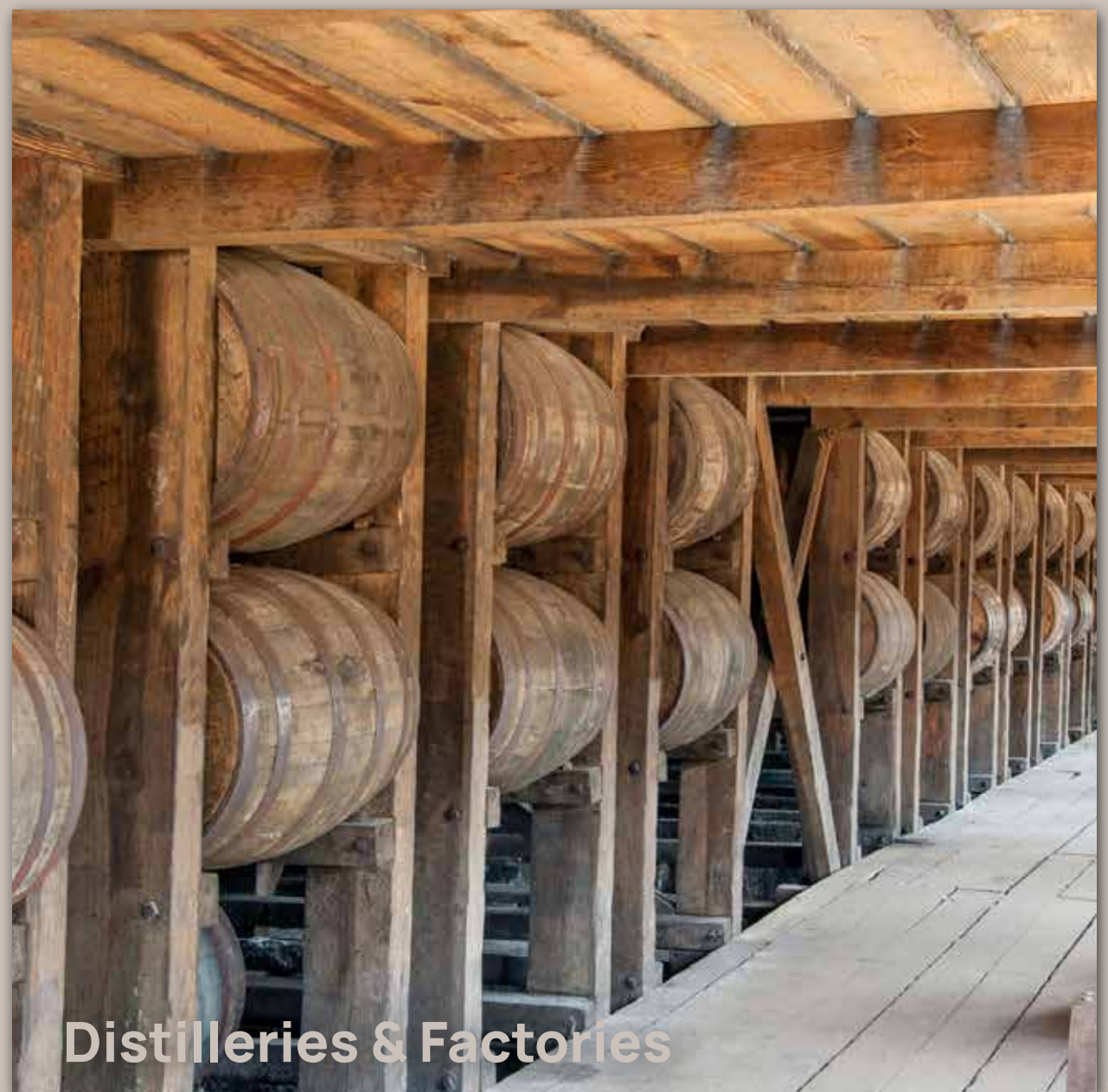


OUR SUPPLY, INVENTORY & SOURCING  
ARE ESSENTIALLY LIMITLESS

Antique Structures



Old Barns



Distilleries & Factories







## Huge Inventory:

We have nearly 3 million board feet in stock.  
We have tens of thousands of square feet of milled flooring and wallboard pre-bundled, ready to ship



## Fast Shipping Program:

We have flooring and wallboard designs milled, ready for immediate shipping.  
Same day/Next day shipping is available for multiple standard products.



## Environmental Fingerprint:

We have reclaimed millions of pounds of salvaged wood prohibiting many more millions of CO2 from negatively impacting the environment.

# Cope & Stick

## CONTACT US TODAY

